



Greenville City Schools

February 2010 Breakfast Menu

Type A Breakfast Prices: Grades 1-12: \$1.55 daily Milk: 45¢
 Reduced Breakfast: 30¢ daily **Make Checks Payable to: Greenville City Schools Cafeteria**

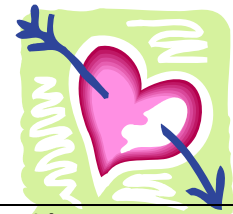



Monday	Tuesday	Wednesday	Thursday	Friday
1 Egg Patty Nutrition Bar Milk	2 Sausage Patty French Toast Stick Applesauce cup Milk	3 Egg & Cheese Omelet Pancake Banana Half Milk	4 Peanut Butter Jelly Pocket Tri Hash Brown Milk	5 Pancake & Sausage Stick Peach Cup Milk
8 Sausage Link French Toast Peach Cup Milk	9 Sausage Patty Pancake Apple Half Milk	10 Peanut Butter Jelly Pocket Orange Juice Milk	11 Egg Patty Nutrition Bar Milk	12 Peanut Butter Jelly Graham Bar Applesauce Cup Milk
15 NO SCHOOL PRESIDENT'S DAY	16 Egg Patty Pancake Grape Juice Milk	17 Peanut Butter Jelly Pocket Orange Juice Milk	18 Sausage Patty Nutrition Bar Milk	19 Sausage Link French Toast Applesauce Cup Milk
22 Sausage Link Nutrition Bar Milk	23 Egg & Cheese Omelet French Toast Applesauce Cup Milk	24 Pancake & Sausage Stick Grapes Milk	25 Egg Patty Pancake Fruit Juice Milk	26 Peanut Butter Jelly Pocket Tator Tots Milk



February 2010 Lunch Menu

Type A Lunch Prices: Grades 1-6: \$2.10 daily (\$10.50 5-day ticket) **Grades 7-12:** \$2.20 daily (\$11.00 5-day ticket) **Milk:** 45¢
 Reduced Lunches: 40¢ daily (\$2.00 5-day ticket) **Make Checks Payable to: Greenville City Schools Cafeteria**



Monday	Tuesday	Wednesday	Thursday	Friday
1 Hot Dog Sandwich(23) Tator Tots(12.75) Diced Pears(15) Milk	2 Chicken Nuggets(13) Macaroni & Cheese(21) Green Beans(3) Pineapple Tidbits(15) Milk	3 Turkey & Noodles (4oz.-22--6oz-33) String Cheese(0) Mashed Potatoes(10.12) Fruit Juice(14) Cake(34) , Milk	4 Pork Barbecue Sandwich(40.3) Peas(6) Peaches & Bananas(19.75) Milk	5 Tony's Pizza (<i>Cheese or Meat</i>) Cooked Carrots(4.23) Applesauce(19) Milk
8 Sloppy Joe Sandwich(32) Green Beans(3) Apple Half(9) Milk	9 Walking Taco(21.75) (<i>Meat , Cheese, Lettuce</i>) Corn(12.75) Diced Apricots(14.25) Milk	10 Spaghetti & Meat Sauce (4oz.-18.66--6oz-28) Breaded Mozzarella Sticks(13) Tossed Salad(7) Grape Juice(16) Milk	11 Cheeseburger Sandwich (26) Oven Fries(16.5) Applesauce(19) Milk	12 Tony's Pizza (<i>Cheese or Meat</i>) Peas(6) Pineapple Tidbits(15) Milk
15  NO SCHOOL PRESIDENT'S DAY	16 Sausage Links(.8) French Toast Sticks(23) Tri Hash Brown(13) Orange Juice(13) Milk	17 Grilled Cheese Sandwich(34) Tomato Soup(14.25) Carrot Sticks(5) Applesauce(19) Milk	18 Chicken Patty Sandwich(34) Broccoli & Cheese(1.5) Diced Pears(15) Milk	19 Tony's Pizza (<i>Cheese or Meat</i>) Green Beans(3) Shape Up Juice Bar(15) Milk
22 Deli Ham Sandwich(22) California Blend & Cheese(4.8) Applesauce(19) Milk	23 Cheeseburger Sandwich(26) Baked Beans(18) Grapes(8) Milk	24 Soft Taco(26.75) (<i>Meat, Cheese, Lettuce</i>) Corn(12.75) Apple Juice(13) Blueberry Buckle(30) Milk	25 Chicken Nuggets(13) Macaroni & Cheese(21) Green Beans(3) Strawberries(24.78) Milk	26 Tony's Pizza(Cheese or Meat) Mixed Vegetables(5.25) Diced Peaches(15.75) Milk
Bread Carbohydrate Counts Bread 2-Slices (23) Hamburger Bun (22) Hot Dog Bun (20) Saltines Package (9) <i>Fruit & Vegetable Servings=3oz.</i>	Milk Carbohydrate Counts White Milk(12) Strawberry Milk(26) Chocolate Milk(30)	Other Carbohydrate Counts Pizza-Cheese(36) Pizza –Pepperoni(35) Pizza-Sausage(35)		

In accordance with Federal law and US Department of Agriculture policy, this institution is prohibited from discriminating on the basis of race, color, national origin, sex, age, or disability. (Not all prohibited bases apply to all programs.) To file a complaint of discrimination, write USDA, Director, Office of Civil Rights, 1400 Independence Avenue, SW, Washington D.C. 20250-9410 or call (800) 795-3272 (voice) or (202) 720-6382 (TDD). USDA is an equal opportunity provider and employer.

(Carbohydrate Count is listed next to food item – Fruits & Vegetable are 3 oz. Servings - Please add milk count to get a total count.)

*A peanut butter sandwich may be substituted for any entrée for Grades 3-12. *Crackers available with all plate lunches. Comments: Tonya Wright, Food Service Manager, 547-0244

Menu Subject to Change Without Notice